

1.25G SFP Transceiver

Features:

- Hot-pluggable capability
- Digital diagnostic monitoring
- VCSEL, MQW FP or DFB Laser
- Duplex LC connectors
- Single +3.3V supply & LVPECL data interface
- LVTTTL logic level RX LOS
- Class 1 Laser Safety Compliance
- Detailed product information in EEPROM
- Excellent EMI & ESD protection
- Qualified to meet the intent of Bellcore reliability practices
- Compliant with SFP MSA specification and SFF-8472
- Links of narrow , intermediate or long reach with single or Multi-mode fiber



Applications:

- ATM
- SONT/SDH/PDH
- FDDI
- Fiber Channel

Function description :

The SFP (Small Form Factor Pluggable) transceiver is compliant with SFP MSA (Multi-Source Agreement) and SFF-8472. All modules satisfy Class I Laser Safety requirements in accordance with the international IEC-825 standards.

The transmitted and received functions are contained in a SFP 20 pin package with a Duplex LC connector interface. The transmitter incorporates a highly reliable 850nm VCSEL or 1310nm FP or 1550nm DFB Laser (VCESL laser for short distance, FP laser for narrow, Intermediate distance and DFB laser for long distance) and a driver circuit which converts data to light with APC function. The output power can be disable via he single TX_Disable pin. Logic LVTTTL high level disables the transmitter. The receiver incorporates an efficient InGaAs/InP PIN or APD photodiode receiver converting the light signal into an electrical current which is amplified and regenerated into data. The transimpedance amplifier IC has internal AGC for wide dynamic range. The post-amplifier is AC coupled to preamplifier through a capacitor and a low pass filter. It can be enough to pass the signal from 100Mb/s to 2.5Gb/s without significant sensitivity. A Signal Detect status output flag is also provided.

The transceiver operates from a single +3.3V power supply over an operating temperature range of 0 to +70°C. The transceiver uses the SFP 20-pin connector to allow hot plug capability. Detailed product information in EEPROM and digital diagnostic monitoring is offered

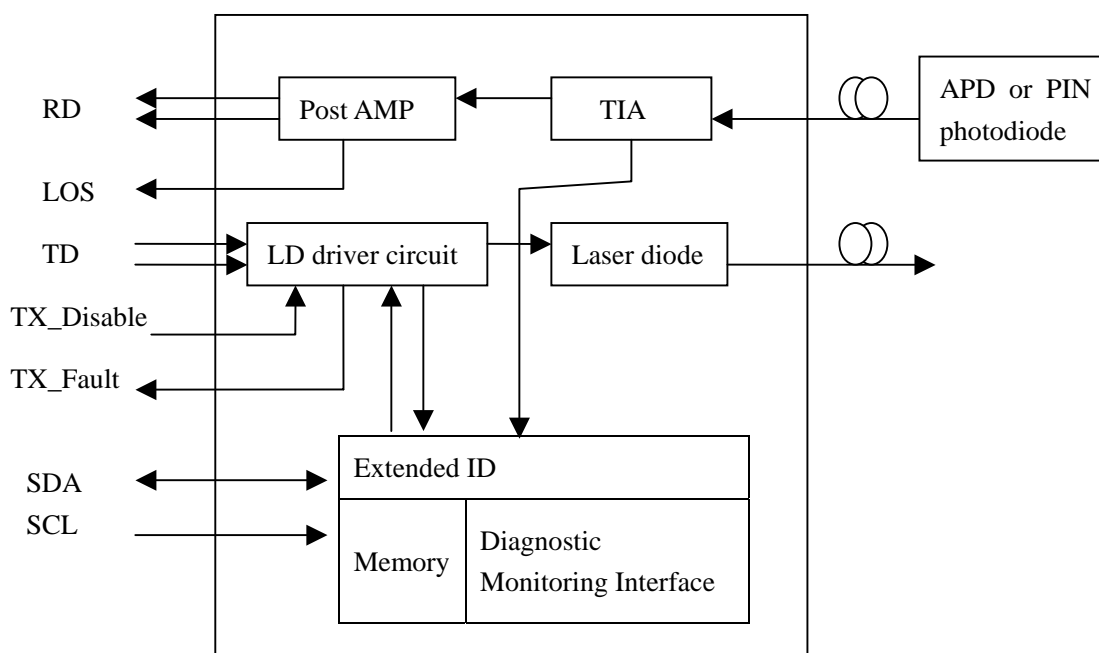


深圳市宏泰达科技有限公司

广东深圳市南山区南新路嘉南美地大厦 A 座 603

电话 : 0755-28008625 83860118 86212020

传真 : 0755-86212020 E-mail : htdtech@126.com

Function Block Diagram:**Specifications:**

Absolute Maximum Ratings						
Parameter	Symbol	Min	Max	Unit		
Supply Voltage	VCC	0	+3.6	V		
Operating Temperature	T _{OP}	-40	+85			
Recommended Operating Conditions						
Parameter	Symbol	Min	Max	Unit		
Supply Voltage	VCC	+3.1	+3.6	V		
Operating Temperature	T _{OP}	0	+70			
Optical characteristics						
Parameter	Symbol	Min	Typical	Max	Unit	
Transmitter						
Optical output	P ₀	1	0	+1	+3	dBm
		2	-5	-3	0	
		3	-8	-6	-5	
		4	-15	-10	-8	
Extinction ratio	ER	10	-	-	dB	
Optical wavelength	λ	1*	1270	1310	1340	nm
		2*	1530	1550	1570	
		3*	820	850	860	



深圳市宏泰达科技有限公司

广东深圳市南山区南新路嘉南美地大厦 A 座 603

电话 : 0755-28008625 83860118 86212020

传真 : 0755-86212020 E-mail : htotech@126.com

Spectral width	$\Delta\lambda$	FP	-	-	4	nm
		DFB	-	-	1	
		VCSEL			1	
Rise time	Tr	-	-	300	ps	
Fall time	Tf	-	-	300	ps	
Transmitter output eye	compliant with Eye Mask Defined in 802.3z standard					
Receiver						
Sensitivity	Sen	1 [*] -2 [*]	-	-22	-20	dBm
		3 [*]	-	-20	-18	
Saturation		-	0	-	-	dBm
Optical wavelength	λ	1 [*] -2 [*]	1100	-	1600	nm
		3 [*]	770	850	860	
Signal detect asserted	P _A	1 [*] -2 [*]	-	-	-20	dBm
		3 [*]	-	-	-18	
Signal detect deasserted	P _D		-38	-	-	dBm
Optical Return Loss	RL		-	-	-27	dB
Electrical characteristics						
Parameter	Symbol	Min	Typical	Max	Unit	
Transmitter						
Data rate (NRZ)	B	-	1250	-	Mb/s	
Supply voltage	V _{CCT}	+3.1	+3.3	+3.5	V	
Supply current	I _{CCT}	-	70	130	mA	
Input HIGH Voltage	V _{IH}	V _{CCT} -1.165	-	V _{CCT} -0.700	V	
Input LOW Voltage	V _{IL}	V _{CCT} -1.890	-	V _{CCT} -1.475	V	
Transmitter Enable voltage	V _{EN}	-	-	0.8	V	
Transmitter Disable voltage	V _D	2	-	-	V	
Receiver						
Data rate (NRZ)	B	155	-	2448	Mb/s	
Supply voltage	V _{CCR}	+3.1	+3.3	+3.6	V	
Supply current	I _{CCR}	-	80	150	mA	
Data Output High	V _{OH}	V _{CCR} -1.025	-	V _{CCR} -0.880	V	
Data Output LOW	V _{OL}	V _{CCR} -1.810	-	V _{CCR} -1.620	V	
LOS Low Voltage	V _{LOUT}	-	-	0.8	V	
LOS High Voltage	V _{HOUT}	2	-	-	V	

(Sensitivity and saturation levels for a 2²³-1 PRBS with 72 ones and 72 zeros inserted over temperature)



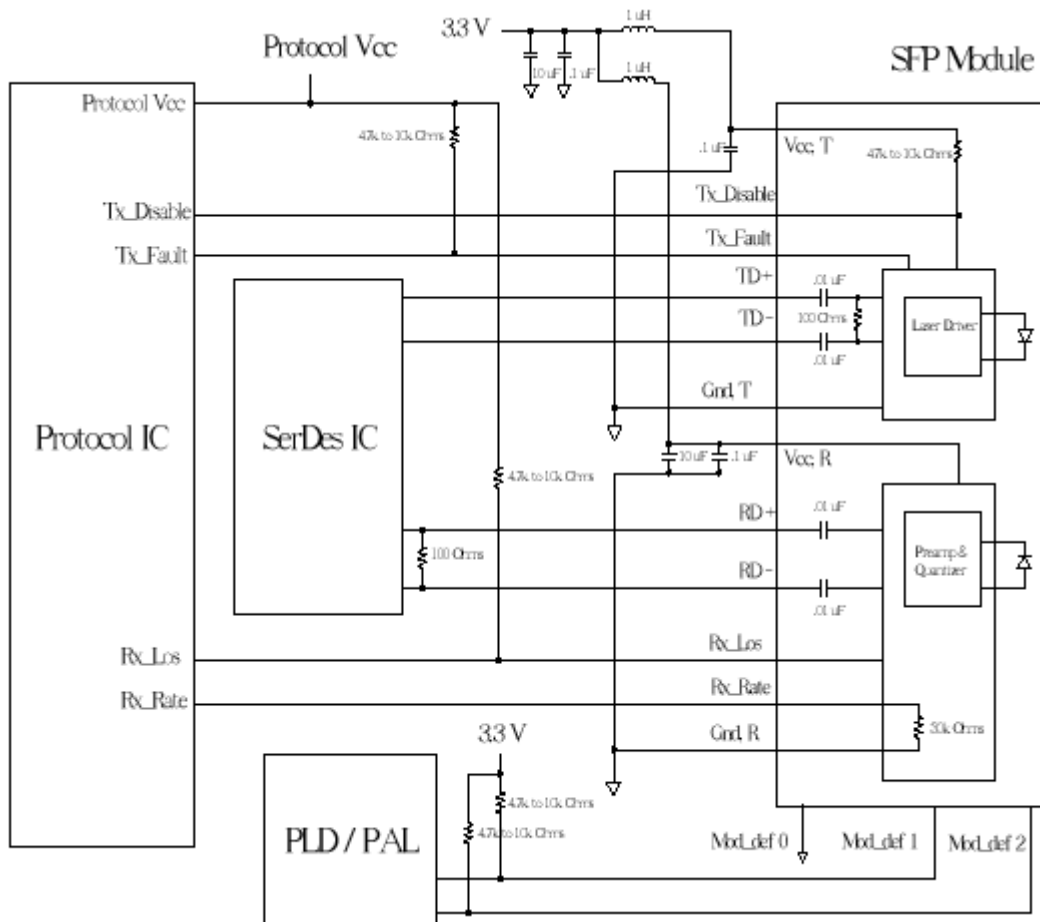
深圳市宏泰达科技有限公司

广东深圳市南山区南新路嘉南美地大厦 A 座 603

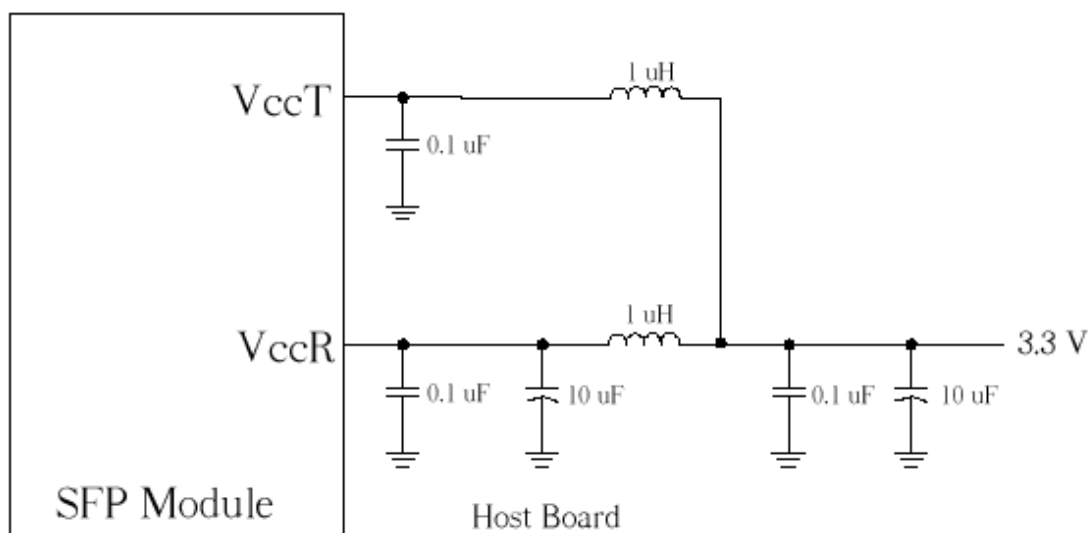
电话 : 0755-28008625 83860118 86212020

传真 : 0755-86212020 E-mail : htotech@126.com

Recommended Circuit :



Example SFP Host Board Schematic



Recommended Host Board Supply Filtering Network

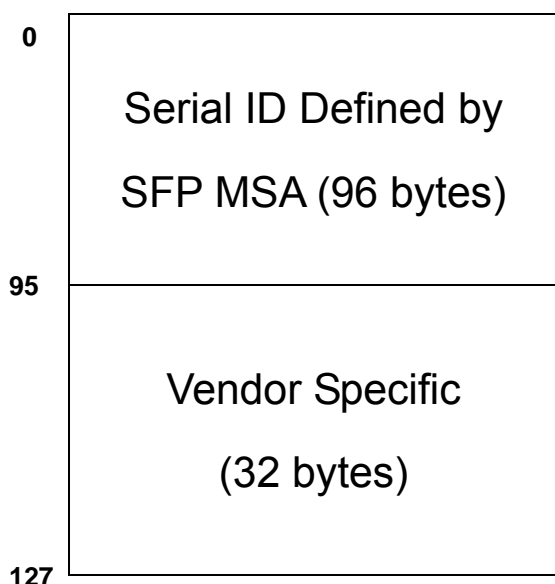
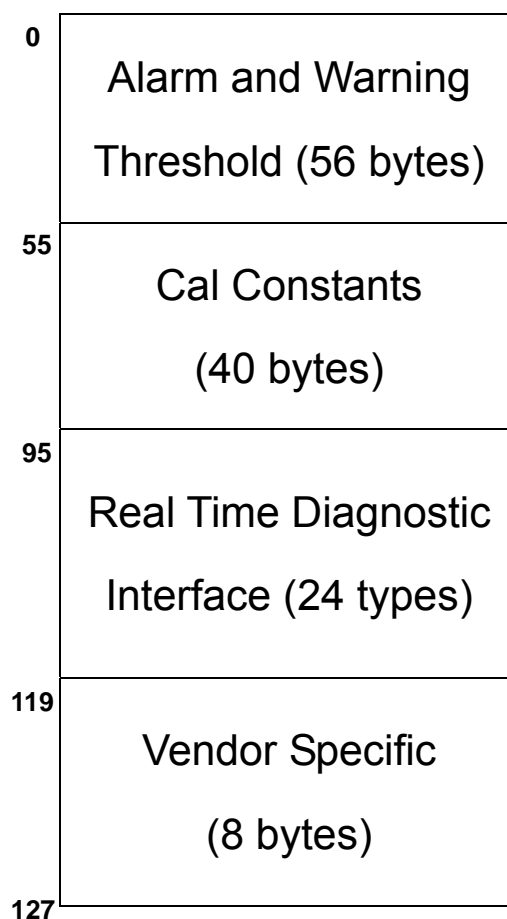


深圳市宏泰达科技有限公司
 广东深圳市南山区南新路嘉南美地大厦 A 座 603
 电话 : 0755-28008625 83860118 86212020
 传真 : 0755-86212020 E-mail : htotech@126.com

EEPROM Description:

The SFP module contains an EEPROM. It provides access to sophisticated identification information that describes the transceiver's capabilities, standard interfaces, and manufacturer. The serial interface uses the 2-wire serial CMOS EEPROM protocol defined for the ATMEL AT24C01A/02/04 family of components. When the serial protocol is activated, the host generates the serial clock signal (SCL MOD_DEF1). The positive edge clocks data into those segments of the EEPROM that are not write-protected within the SFP transceiver. The negative edge clocks data from the SFP transceiver. The serial data signal (SDA MOD_DEF2) is bi-directional for serial protocol activation. The memories are organized as a series of 8-bit data words that can be addressed individually or sequentially.

The module provides diagnostic information about the present operating conditions. The transceiver generates this diagnostic data by digitization of internal analog signals. Calibration and alarm/warning threshold power monitoring, bias current monitoring, supply voltage monitoring and temperature monitoring all are implemented. The diagnostic data are raw A/D values and must be converted to real world units using calibration constants stored in EEPROM locations 56-95 at wire serial bus address A2h. The digital diagnostic memory map specific data field define ad following.

2-wire address 1010000X(A0h)**2-wire address 1010001X(A1h)**

深圳市宏泰达科技有限公司

广东深圳市南山区南新路嘉南美地大厦 A 座 603

电话 : 0755-28008625 83860118 86212020

传真 : 0755-86212020 E-mail : htdtech@126.com

PIN description:

Pin Name	PIN	Name/Function
GNDR	9、10、11、14	Receiver Ground
VCCR	15	Receiver Supply Voltage. They are defined as +3.3V±5% at the SFP connector pin. Recommended host board power supply filtering is shown below. The DC resistance of inductor is less than 1Ω, which result in maintaining the required voltage at the SFP input pin with +3.3V supply voltage.
RD-	12	Receiver Data, Differential Output. They are AC coupled 100Ωdifferential lines which should be terminated with 100Ωat the user SERDES. The AC coupling is done inside the module and is thus not required on the host board. The voltage swing on these lines will be between 370mV and 2000mV differential when properly terminated.
RD+	13	Receiver Data, Differential Output. They are AC coupled 100Ωdifferential lines which should be terminated with 100Ωat the user SERDES. The AC coupling is done inside the module and is thus not required on the host board. The voltage swing on these lines will be between 370mV and 2000mV differential when properly terminated.
LOS	8	Receiver Loss of Signal, logic high, open collector compatible, 4.7K to 10K Ohm pull up to VCCR on host
Rate Select	7	NC.
GNDT	1、17、20	Transmitter Ground
VCCT	16	Transmitter Supply Voltage. They are defined as +3.3V±5% at the SFP connector pin. Recommended host board power supply filtering is shown below. The DC resistance of inductor is less than 1Ω, which result in maintaining the required voltage at the SFP input pin with +3.3V supply voltage.
TD+	18	Transmit Data, Differential Input. They are AC coupled 100Ωdifferential lines which should be terminated with 100Ωinside the module. The AC coupling is done inside the module and is thus not required on the host board.
TD-	19	Transmit Data, Differential Input. They are AC coupled 100Ωdifferential lines which should be terminated with 100Ωinside the module. The AC coupling is done inside the module and is thus not required on the host board.
TX_Disable	3	Transmitter Disable, logic high, open collector compatible, 4.7K to 10K Ohm pull up to VCCT on SFP. The pin is used to shut down the transmitter optical output. High is transmitter Disabled, Low is transmitter on.
TX_Fault	2	Transmitter Fault, logic high, open collector compatible, 4.7K to 10K Ohm pull up to VCCT on host. When high, output indicates a laser fault of some kind. Low indicates normal operation.
MOD_DEF0	6	SFP module definition and presence, bit 0, 4.7K to 10K Ohm pull up to VCCT on host. The pin is grounded by the module to indicate that the module is present.
MOD_DEF1	5	SFP module definition and presence, bit 1, 4.7K to 10K Ohm pull up to VCCT



深圳市宏泰达科技有限公司

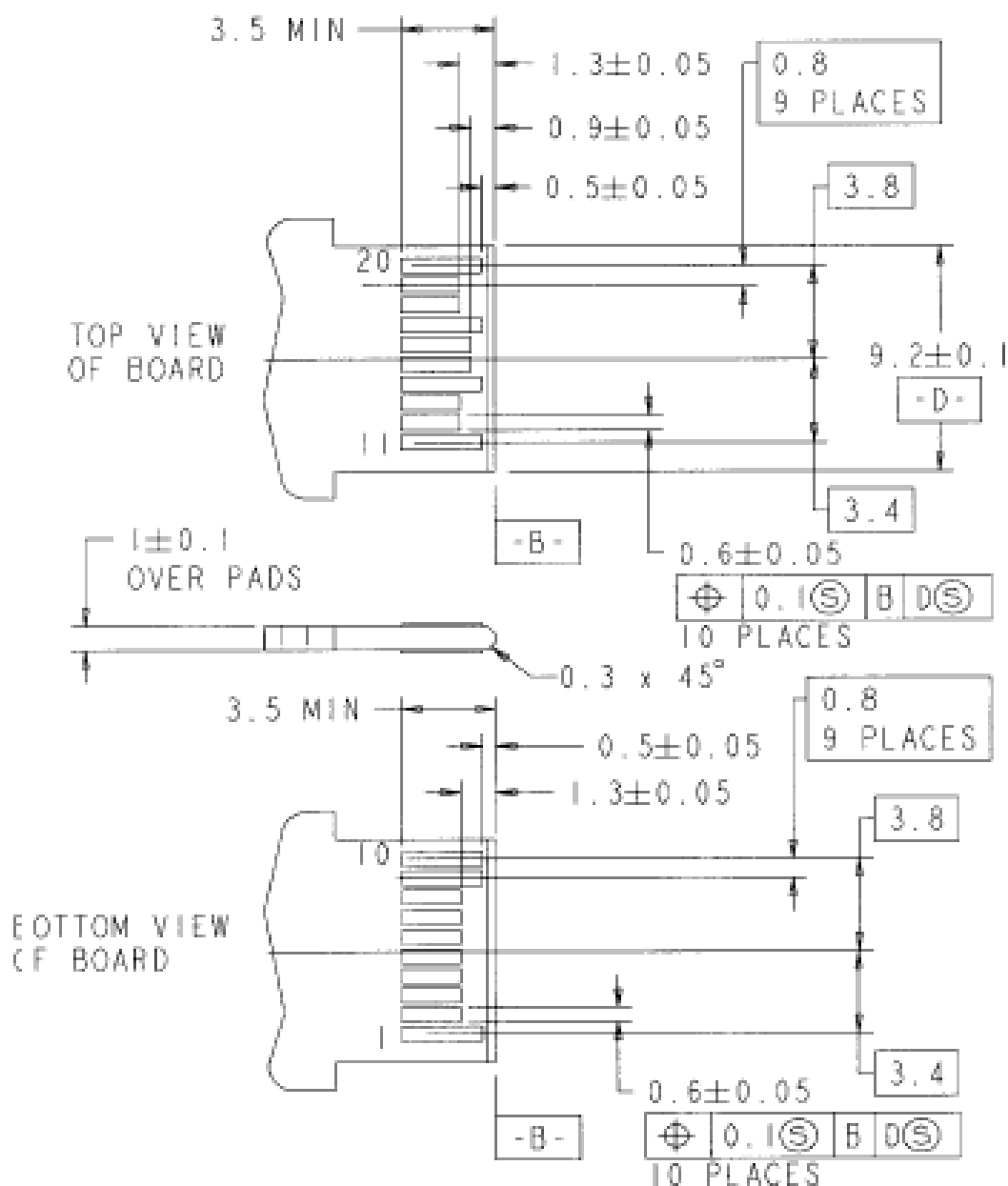
广东深圳市南山区南新路嘉南美地大厦 A 座 603

电话 : 0755-28008625 83860118 86212020

传真 : 0755-86212020 E-mail : htdtech@126.com

		on host. The pin is the clock line of two wire serial interface for serial ID
MOD_DER2	4	SFP module definition and presence, bit 2, 4.7K to 10K Ohm pull up to VCCT on host. The pin is the data line of two wire serial interface for serial ID.

Pattern Layout of SFP Printed Circuit Board: (Unit: mm)



深圳市宏泰达科技有限公司

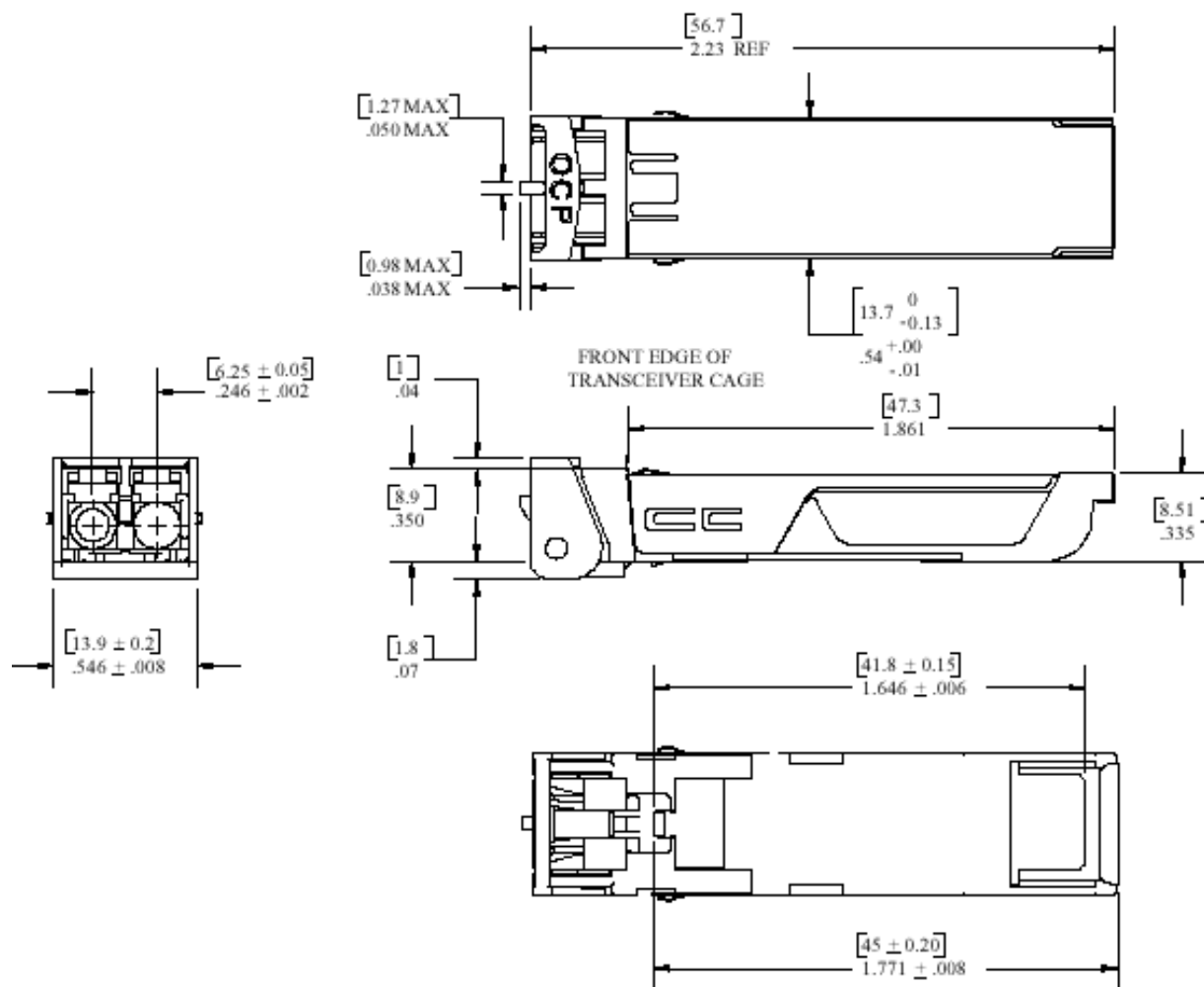
广东深圳市南山区南新路嘉南美地大厦 A 座 603

电话 : 0755-28008625 83860118 86212020

传真 : 0755-86212020 E-mail : htdtech@126.com

Dimensions configuration :

Package Outline Unit: [mm] inch



Ordering Information :

Model	Rate	Optical source	Receptacle	Voltage	Distance
T		—	—	—	()
T=Transceiver	155=155Mbs	V8=850nm VCSEL	SC=SC	3v=3.3v	550=550m
	125=1.25Gbs	E3=1310nm LED	FC=FC	5v=5v	02=2Km
		F3=1310nmFP LD	ST=ST	XX=3.3v/5v	20=20Km
		F5=1550nmFP LD	BS=SC Bi-Di		40=40Km
		D3=1310nmDFB LD	BL=LC SFP Bi-Di		60=60Km
		D5=1550nmDFB LD	GB=SC GBIC		80=80Km
			LC=SFP LC		100=100Km

For example : T125-F3-LC-3V-20



深圳市宏泰达科技有限公司

广东深圳市南山区南新路嘉南美地大厦 A 座 603

电话 : 0755-28008625 83860118 86212020

传真 : 0755-86212020 E-mail : htotech@126.com